

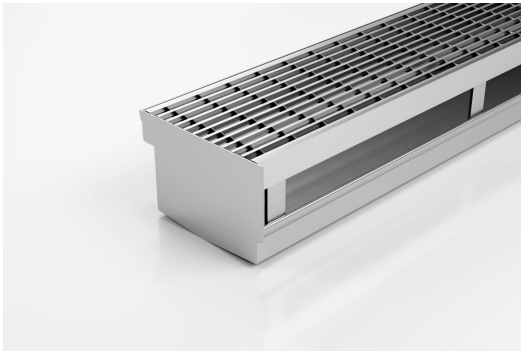


ARCHITECTURAL
GRATES + DRAINS



100TRTDi

Threshold with Sub-Sill



The 100TRTDi is a Threshold Drain for door track with sub sill tray featuring our 100mm wide standard grate.

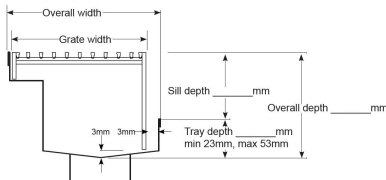
For sliding and Hinged doors.

Featuring a linear stainless steel grate with concealed channel section connecting sill and sub-sill for door tracks and thresholds.

Allows door sills to be drained while having internal and external floor surfaces with no step down.

Please be aware that depending on the installation environment, for a pool installation or close to a surf beach, you may need to have your stainless steel grates electropolished.

- Code** 100TRTDi
- Range** Threshold
- Grate Style** TR
- Category** Made-to-Length
- Channel Material** Stainless Steel
- Steel Grade** 316



Grates longer than 1500mm supplied in sections. Tile Inserts longer than 1200mm supplied in sections. Channels over 3000mm supplied in sections with joiner. +/-2mm tolerance on dimensions.

SPECIFICATIONS + DIMENSIONS

Channel Width	105mm
Channel Depth	Adjustable
Length(s)	As Required
Outlet Size	N/A

STORMTECH COLOUR FINISHES



Electroplate finishes subject to natural variation with time and local environment. Factors such as pools/surf beaches may require electropolishing. Contact us for suitability.

PRODUCT APPLICATIONS

- Bathroom Drainage
- Special Needs Drainage
- Aged / Health Care Drainage
- Threshold Drainage
- Balcony Drainage
- Suspended Slab Drainage
- Commercial Drainage
- Courtyard / Patio Drainage
- Paved Area Drainage

Copyright © Stormtech Pty Ltd. Patent 733361. Drawings not to scale, please use dimensions shown. Downloaded 19/05/2026 (please check for updates)



Visit stormtech.com.au
for tools + inspiration.

Phone **1300 653 403**

Email info@stormtech.com.au