

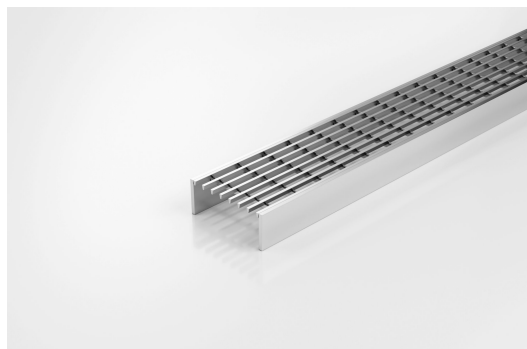


ARCHITECTURAL
GRATES + DRAINS



65TR25

Linear Drain



The 65TR25 is our standard grate designed to be used with our Special Assembly units 65G100 and 65G90.

65mm wide UPVC channel is connected via downpipes at 200mm intervals to sockets in a 100mm drain below. This allows the channel to be installed level while the drainpipe is given sufficient fall to be self-cleaning.

Please note that our TR grates have a non finished finish.

Please be aware that depending on the installation environment, for a pool installation or close to a surf beach, you may need to have your stainless steel grates electropolished.

This unique drainage system was recognised for its innovation by a DesignMark at the Australian International Design Awards.

Code 65TR25

Range Special Assembly

Grate Style TR

Category Components

Channel Material Stainless Steel

Steel Grade 316

Grates longer than 1500mm supplied in sections. Tile Inserts longer than 1200mm supplied in sections. Channels over 3000mm supplied in sections with joiner. +/-2mm tolerance on dimensions.

SPECIFICATIONS + DIMENSIONS

Channel Width	65mm
Channel Depth	25mm
Length(s)	900mm 1000mm 1200mm 1500mm
Outlet Size	N/A

STORMTECH COLOUR FINISHES



Stainless Steel Electropolished

Electroplate finishes subject to natural variation with time and local environment. Factors such as pools/surf beaches may require electropolishing. Contact us for suitability.

PRODUCT APPLICATIONS

- Balcony Drainage
- Courtyard / Patio Drainage
- Pool and Spa Area Drainage
- Hospitality Drainage
- Paved Area Drainage
- Special Needs Drainage
- Threshold Drainage
- Suspended Slab Drainage



Copyright © Stormtech Pty Ltd. Patent 733361. Drawings not to scale, please use dimensions shown. Downloaded 20/05/2026 (please check for updates)

Visit stormtech.com.au
for tools + inspiration.

Phone **1300 653 403**

Email info@stormtech.com.au