

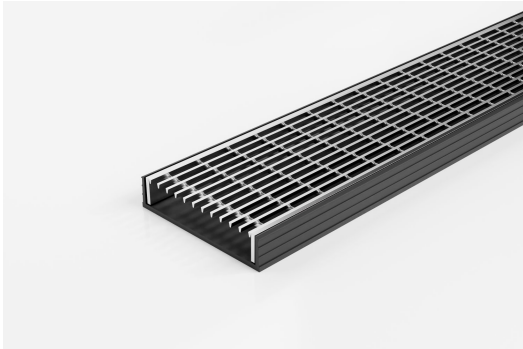


ARCHITECTURAL
GRATES + DRAINS



100TRGBL20

Linear Drain



The 100TRG20 is a modular drainage system with a stainless steel grate and a Black uPVC channel.

The 100TR is our standard style grate featuring a 3mm/5mm wire gap.

Manufactured from 316 marine grade steel.

Please note that our TR grates have a non finished finish.

Black uPVC channel only suitable for Internal use only

Kits longer than 3000mm available on request.

Code 100TRGBL20

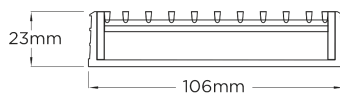
Range 100

Grate Style TR

Category Modular Kits

Channel Material uPVC

Steel Grade 316

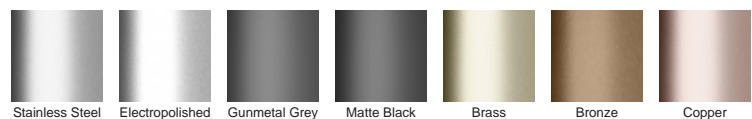


Grates longer than 1500mm supplied in sections. Tile Inserts longer than 1200mm supplied in sections. Channels over 3000mm supplied in sections with joiner. +/-2mm tolerance on dimensions.

SPECIFICATIONS + DIMENSIONS

Channel Width	106mm
Channel Depth	23mm
Length(s)	900mm 1000mm 1200mm 1500mm 1800mm 2000mm 2200mm 2400mm 2700mm 3000mm
Outlet Size	DN80, DN100

STORMTECH COLOUR FINISHES



Electroplate finishes subject to natural variation with time and local environment. Factors such as pools/surf beaches may require electropolishing. Contact us for suitability.

PRODUCT APPLICATIONS

- Bathroom Drainage
- Wet Area Drainage
- Aged / Health Care Drainage
- Hospitality Drainage
- Shower Drainage
- Multi-Residential Drainage
- Special Needs Drainage

Copyright © Stormtech Pty Ltd. Patent 733361. Drawings not to scale, please use dimensions shown. Downloaded 20/05/2026 (please check for updates)



Visit stormtech.com.au
for tools + inspiration.

Phone **1300 653 403**

Email info@stormtech.com.au