

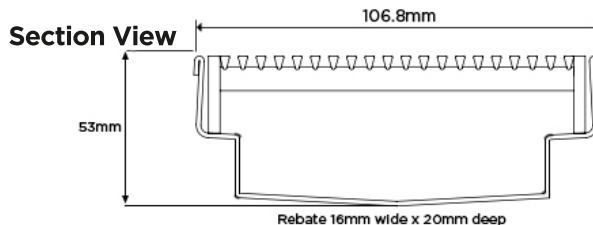
## Order and Quote Form

# Made-to-Length Mitre Joint Stormtech Linear Drainage

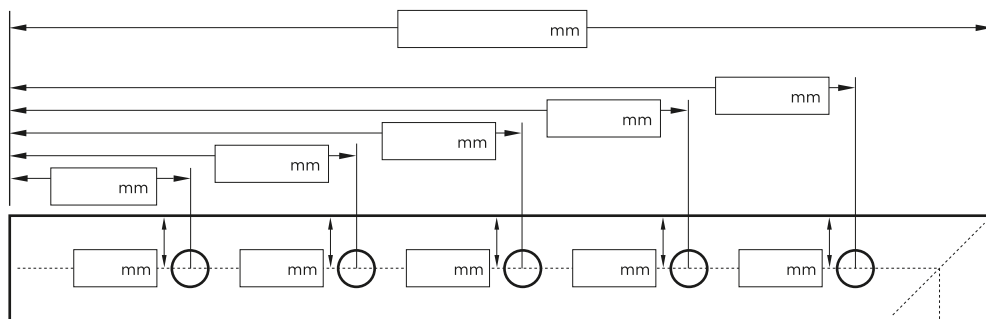


## Product Details

Product Code 100ARi50MTL  
 Grate Style AR  
 Stormtech Range 100  
 Channel Material Stainless Steel



## Dimensions and Outlet Requirements



Dimensions not to scale.

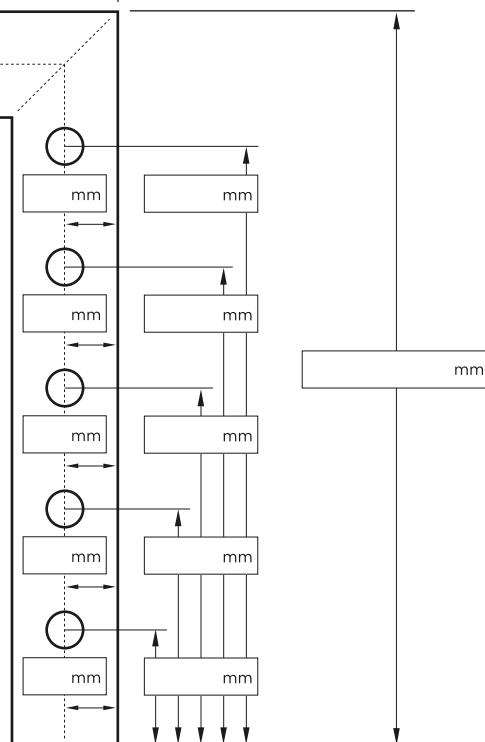
**Please include drainage lengths and all required outlets. Outlets can be offset from centre of channel, please specify as required.**

### Outlet Size

☐ 38mm ☐ 44mm ☐ 51mm  
☐ 63mm ☐ 76mm

### Additional Notes

**PLEASE NOTE** See AS3500 standard & local regulator for specific outlet and drainage requirements. Stainless Steel Grade is 316 unless specified. Made-to-Length minimum charge of 800mm. Grates longer than 1500mm and Tile Inserts longer than 1200mm are supplied in multiple sections. Channels 3000mm maximum in one piece, channels over 3000mm are supplied in multiple sections with joiner. +/- 2mm tolerance on dimensions.



### Full Name

### Company Name

### Telephone

### Email Address

### Distributor or Contact

### Order Number

### Stormtech Quote Number

Phone 1300 653 403 | Fax 02 4423 5552

Email [info@stormtech.com.au](mailto:info@stormtech.com.au)



[stormtech.com.au](http://stormtech.com.au)